

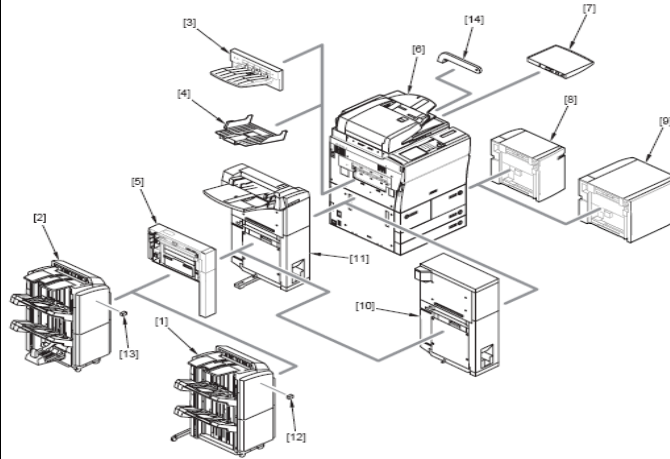
iR5055 /5065/5075 TECHNICAL DATA SHEET

REV NO: 0

MODEL NAME	TYPE	SPEED	MINIMUM POWER SUPPLY REQUIREMENT
iR5055/5065/5075	Body Type: Console	iR5055 - 55/32	Clean 230v 50HZ Via 13 Amp Plug
		iR5065 - 65/32	2.3 kW Power Consumption Maximum
		iR5075 - 75/37	

Pickup/Delivery Accessories

- 1) Finisher-AD1
- 2) Saddle Finisher-AD2
- 3) Shift Tray-D1
- (1bin shift tray, no staple)
- 4) Copy Tray-L1
- 5) Puncher Unit-AS1 (2 hole)
or AU1 (4 hole)
- 6) DADF-S1 (standard)
- 7) Document Tray-M1
- 8) Paper Deck-AD1 (A4)
- 9) Paper Deck-AE1 (A3)
- 10) Paper Folding Unit-E1
- 11) Document Insertion/Folding Unit F1
- 12) Staple Cartridge-J1
- 13) Staple Cartridge-D2/D3
- 14) ADF Access Handle-A1



BASIC COPIER SPECIFICATION	PRINTER ENGINE SPECIFICATION	FIRST COPY OUT TIMES
DADF as standard	Laser Exposure	* 3.3 secs (3.1 for 5075) From Glass (Book Mode)
Xenon Lamp Exposure	600 x 2400 (equivalent) dpi Resolution Copying	Conditions:
600 x 600 DPI Scanning	1200x1200 dpi (equivalent) dpi Resolution Printing	book mode, Direct
CCD Array	256 Gradations	Right Deck A4
1-9999 copies	40Gb Hard Drive	Non AE
	Corona Charging Method	Paper Delivery Into Copy Tray
	Corona Transfer Method	*Does Not Include Lamp Pre Activation Time
ACCEPTABLE ORIGINAL TYPES	30seconds or less Warm Up Time (@ 20 C)	TONER CONSUMPTION C-EXV 22
Sheets, Books	ASi Drum 80 mm Diameter	Approx 48K A4 Sheets @ 6% Coverage
Maximum size 304.8 x 432mm	Monocomponent Development System	DRUM LIFE
3D Objects Maximum Weight 2KG	Onboard Memory (1GB MAX)	3,000,000, Copies

COPYING / PRINTING REPRODUCTION SPEEDS

Media Types	Copying Speed	Paper Size	iR5055	iR5065	iR5075	WARM UP TIMES
Plain Paper 64-200 gsm, *Transparencies, Heavyweight Paper, *Coloured paper, *label sheet (*Canon recommended)	100 % Ratio	A3	32	32	37	When Main Power Is Turned On, 30seconds or less
		A4	55	65	75	
		A4R	40	47	54	Activation From Energy Saver Mode:
		A5R	35	35	35	
						-10%mode
						-25%mode
					-50% mode	
	Zoom Range	Double Siding				Department ID
	25~400% (In 1% Increments)	A5R-A3 64-200gsm				Yes Dept ID and Password up to 7 digits each

PAPER SOURCE AND MEDIA SIZES

COUNTER TYPE

Paper Decks 64-200gsm	A4 Standard size, can be set to B5 or LTR	Electronically Changed In Service Mode To Display Various Combinations, Six Displays Available To Customer
Cassettes 64-200gsm	A3, A4, A4R, A5R, B5R, LGL, LTR,	
Manual Feed 64-200gsm	A6-A3 Max 297 x 432mm	
Side Paper Deck-AD1 64- 200gsm	A4, B5 or LTR	
64-200gsm	B5-A3	

AUTO POWER OFF

Not Available

NETWORK SCANNING

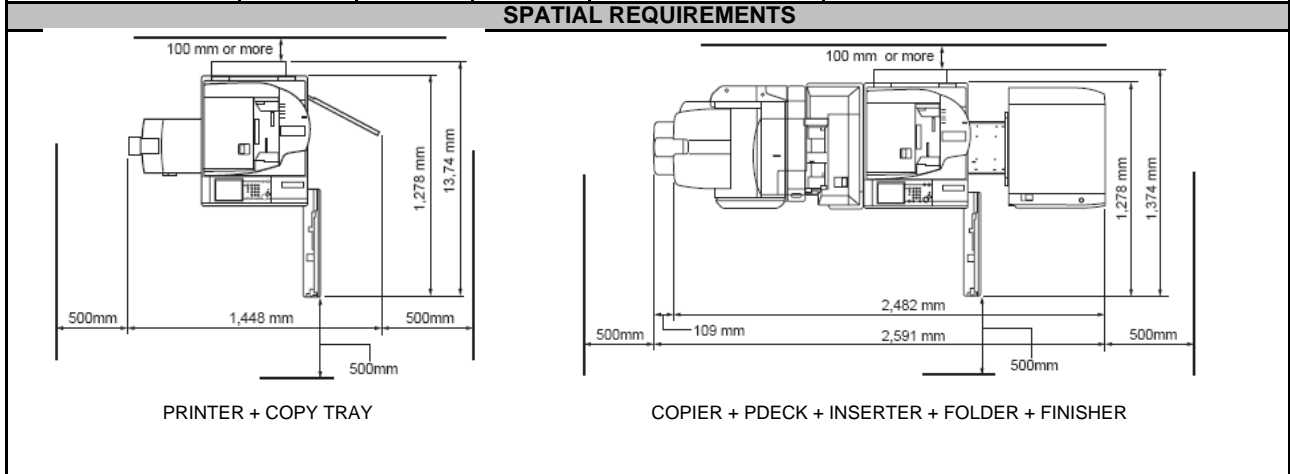
Pull Scan available over local network using Network Scan Gear
Push scan with optional Send Kit F1

PAPER SPECIFICATION		
Feed Location	Capacity	Type of Media
Standard Cassette x 2	550 Sheets @ 80gsm	Plain Paper (64 - 80gsm)
Manual Feed	Approx 50 Sheets @ 80 gsm	Plain Paper (64- 200gsm) *Transparencies, *Label Sheet, Postcard (A6 size) (*Canon recommended)
Paper Decks x 2	1500 Sheets 80gsm	Plain Paper (64-200gsm)
Total Paper Capacity available	with all options - 7650 sheets @80gsm	
Duplex	Single Through-path,Double Sided (No Holding Tray)	Plain Paper (64 -200gsm)
Manual Feed Double Sided (Not Duplex)	50 Sheets @ 80 g/m Central Reference Adjustment	Plain Paper (64 - 200gsm)

ENVIRONMENTAL DATA		
Power Consumption	Operating Noise	Ozone Emission
Maximum 2.3Kw or Less	Copying 75 dB or Less	0.02 ppm or less (Average) 0.035 ppm or less (Max)
	Standby 58 dB or Less	

Operating Environment	Min	Max	Heat Output	
Temperature Range	15 °C	27.5 °C	Standby	Dependant upon energy save setting
Relative Humidity Range	25%	75%		
Atmospheric Pressure	810.6hpa	1013.3hpa	Copying	8532 BTU/Hour

PHYSICAL DATA					
	Width	Depth	Height	Weight	Comments
Dimensions Main Body	643mm	839mm	1207mm	220kg	Includes DADF S1
Finisher-AD1	758mm	656mm	1121mm	48kg	
Saddle Finisher-AD2	758mm	656mm	1121mm	70.5kg	Consumables
Shift Tray-D1	365mm	547mm	255kg	4.2kg	Drum - C-EXV 1
Paper Folding Unit E1	293mm	671mm	1125mm	58kg	Toner - C-EXV 22
Paper Folding Unit F1	662mm	679mm	1242mm	76kg	Staple Cartridge - J1(Fin AD1/AD2)
Paper Deck AD1	323mm	583mm	574mm	29.8kg	Staple Cartridge - D3 (S/F AD2)
Paper Deck AE1	593mm	621mm	574mm	45.1kg	
Puncher Unit-L1/N1		N/A	N/A	7.2kg	



INFORMATION REQUIRED FOR POINT LOADING CALCULATION				
Machine weight	220kg		Castor diameter	tba
Area between castors	tba		Castor width	tba

OTHER INFORMATION

It is recommended to use a dedicated Power Outlet for the machine. Sharing other appliances with the machine may impair product performance. For example, appliances that switch on and off frequently. (Refrigerators)

In all cases, power rating must be considered when using power outlets.

The machine site must be well ventilated and free from exposure to direct sunlight.

ALL INFORMATION ON THIS DATA SHEET IS SUBJECT TO CHANGE WITH IMPROVEMENT OR REDESIGN OF THE PRODUCT. FOR INTERNAL USE ONLY NOT FOR PUBLICATION

Printing/Transmission Accessories

- | |
|--|
| 1) Expansion Bus-D2 |
| 2) Voice Guidance Kit-B1 |
| 3) Super G3 FAX Board-Z1 |
| 4) HDD Data Erase Kit-A1 |
| 5) Card Reader-C1 |
| 6) Card Reader Attachment-C2 |
| 7) HDD Data Erase Kit-A1 (license certificate) |
| 8) UFR II/PCL Printer Kit-R1 (license certificate) |
| 9) PS Printer Kit-R1 (license certificate) |
| 10) Barcode Printing Kit-A1 (license certificate) |
| 11) Encrypted Printing Software-C1 (license certificate) |
| 12) Universal Send Searchable PDF Kit-A1 (license certificate) |
| 13) Digital User Signature PDF Kit-A1 (license certificate) |
| 14) Web Access Software-F1 (license certificate) |
| 15) Remote Operator's Software Kit-A1 (license certificate) |
| 16) Secure Watermark-A1 (license certificate) |
| 17) AMS Kit (license certificate) |
| 18) Universal Trial Kit-C1 (license certificate) |
| 19) Universal Send Kit-F1 (license certificate) |

