

Product Information Document  
for  
imagePRESS Server-Q2  
ColorPASS / PS-GX200

Ver1.0

### History Table

Ver1.0	New	13 May 2008

## Table of Contents

1. Hardware Specification
  - 1-1. **Twin-ax cable for GX200**
  - 1-2. **HDD Security Option Kit**
  - 1-3. **GUI kit for GX200 /Q2 Server**
  
2. Fiery System 8.0 Release 2 Feature
  - 2-1. **Use PDF XObjects via job properties**
  - 2.2. **PPML (v2.2) compliance and PODi certification**
  - 2.3. **Define Record Length**
  - 2.4. **Record Info for VDP jobs**
  - 2.5. **Impose 2.7**
  - 2.6. **Fiery Remote Scan**
  - 2.7. **Booklet Maker**
  - 2.8. **Job Mismatch**
  - 2.9. **Bonjour**
  - 2.10 **IEEE 802.1x**
  
3. Additional Feature for GX200/Q2
  - 3.1. **Software upgrade from GX100 / Q1**
  - 3.2. **Calibration measurement page size enhancement**
  - 3.3. **Minor improvement**
  - 3.4. **Blank page detection**
  - 3.5. **Drop off Text/Graphics Quality**
  - 3.6. **Print Gray using Black only**
  - 3.7. **Advanced Smoothing default=OFF [Q2 Only]**
  - 3.8. **Bundle Adobe JapanColor Profile**
  - 3.9. **Output Intent Profile and Rendering Intent**
  - 3.10. **Forgra Media Wedge: additional color bar**
  - 3.11. **H2O(A3100/2100/1100) Compatible Output Profiles**

# 1. Hardware Specification

## PS-GX200 / imagePRESS Server-Q2 (Same HW for both)

Component	Specification	Comments
EFI Platform name	Pro80	RoHS compliant
CPU	Core2 Duo E6400, 2.13GHz, FSB 1066MHz, 2MB Cashe	
Chipset	Intel 3010 Mukilteo2	
Memory	DDR2 1GB(512MBx2) No upgrading	
HDD	3.5inch, 160GB(160GBx1), SATA	
Optical	Disc Drive DVD/CD RW Drive	
Video circuit IF	PCI-X	
Video IF	DDI-O4(128MHz),3m Tw-ax pair MDR cable High spec cable	
Ethernet port to LAN (Printer port)	1000/100/10MbE	
Ethernet port to iR	1000/100/10MbE	
Size,Weight	Approx. 48.3cm(D) x 21.5cm(W) x 48.5cm(H), 19.7Kg	

- No power linkage to engine.
- Twin-ax cable with keyed connector to prevent mis-insertion

The followings are required for the connection of GX200 to CLC5151 / 4040

Item	Remarks	Part No.
Open I/F board unit	RO-B board unit	FM2-7430 (Canon P/N)
Video I/F cable	3m Twin-ax MDR cable (40pin)	FK2-2304 (Canon P/N)
Crossover Ethernet cable	3m, Shielded cable	45042867 (EFI P/N)

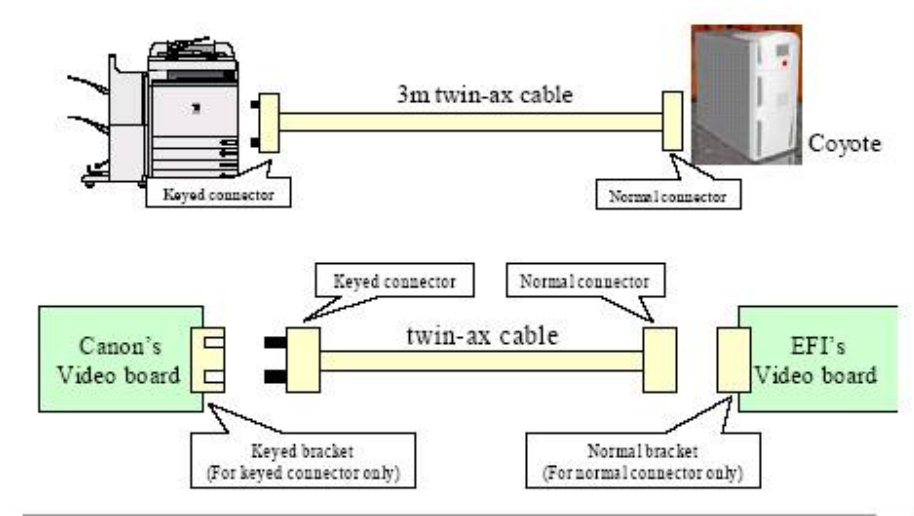
The followings are required for the connection of iPR Server Q2 to imagePRESS-C1

Item	Remarks	Part No.
Open I/F board unit	O-B board unit	FM2-7360 (Canon P/N)
Video I/F cable	3m Twisted Pair MDR cable (40pin)	FH2-7188 (Canon P/N)
Crossover Ethernet cable	3m, Shielded cable	45042867 (EFI P/N)

### 1-1 Twin-ax cable for GX200

Twin-ax cable is higher spec compare to Twisted pair cable. It is needed to transfer video data at high speed.

Twin-ax cable has keyed connector to prevent mis-use of another cable (for example Twisted pair cable). To connect H1 / Q1 / Q2 and Canon's engine, Keyed bracket needed for Canon's engine side.



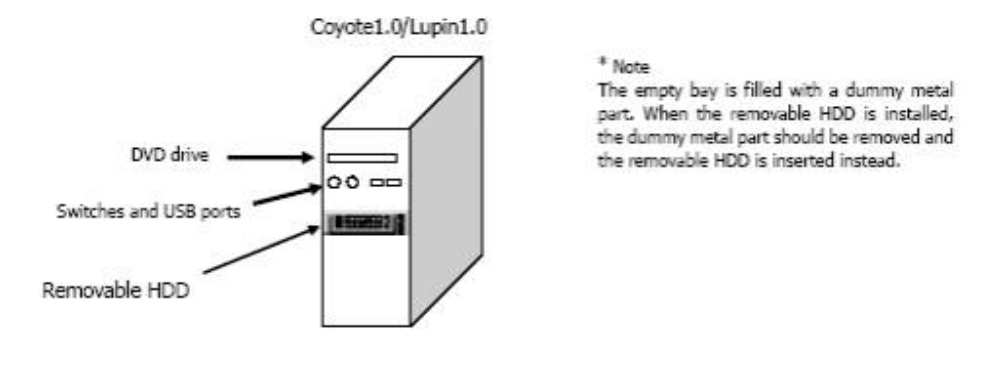
### 1-2. HDD Security Option Kit

The HDD Security Option Kit is available for GX200 / Q2. This option makes it possible that users remove the hard disk drive from chassis and store it into a safe storage in order to prevent the hard disk drive data corruption.

Regarding to GX200 / Q2 has just one HDD unit inside of enclosure as standard. The enclosure has one 5-inches bay available for RHK. So that a RHK to be installed into the available 5-inches bay is prepared for GX200 / Q2.

Practically, the "Removable HDD kit -B1" for previous GX100 / Q1, is available as it is.

The HDD Security Option Kit consists of a receiving frame and a drive carrier box. The hard disk drive is installed into the drive carrier box. The receiving frame holds the drive carrier box, and is attached in the empty bay of GX200/Q2. When the power of GX200/Q2 is off, the drive carrier box can be removed from the receiving frame of GX200/Q2 to store in somewhere secured, for example a safe.



### 1-3. GUI kit for GX200 /Q2 Server

1113V574 (Stand and GUI Kit for imagePRESS Server) is suit for GX200/Q2.

## 2. Fiery System 8.0 Release 2 Feature

### 2-1. Use PDF XObjects via job properties

#### 2.1.1. Overview

Before System 8 Release 2, setting of this feature was only available at the configuration of the Server side. In System 8 Release 2, it becomes also available at job by job via Job Properties.

#### 2.1.2. Restriction

Added only in Job Properties. It does not appear in the client side Printer Driver.

#### 2.1.3. PPD

Added in VDP category.

#### 2.1.4. UI Constraints

None.

#### 2.1.5. UI Behavior



#### 2.1.6. Setup on LCD

It can be set both at LCD and WebTools 3 configure (No change since System 8).

### 2.2. PPML (v2.2) compliance and PODi certification

#### 2.2.1. Overview

Before System 8 Release 2, supported version of PPML was v2.1. System 8 Release 2 supports v2.2 and compliance includes PODi certification.

#### 2.2.2. Restriction

(No information on this issue.)

#### 2.2.3. UI Behavior

No change.

### 2.3. Define Record Length

#### 2.3.1. Overview

This option allows the user to set a condition where a PS or PDF file can be processed/handled like a VDP job. When set to "On", the user can then define a fixed record length (= Pages Per Record) to be used for VDP processing. This feature is also an enabled for record-based finishing and VDP imposition.

<Example> When setting following options for a 10 page job,

- Define Record Length = On
- Pages Per Record = 3
- 2-Sided Printing with Staple

The result will be

[1/2][3/Blank] <-Staple

[4/5][6/Blank] <-Staple

[7/8][9/Blank] <-Staple

[10/Blank]

### 2.3.2. Restriction

Define Record Length is not an available job property option for VDP and Quick Doc Merge jobs.

### 2.3.3. PPD / Job properties

Added in VDP category.

- Define Record Length [off, On]
- Pages Per Record [number, 1 - 999]

### 2.3.4. UI Behavior



### 2.3.5. Setup on LCD

None

## 2.4. Record Info for VDP jobs

### 2.4.1. Overview

Beginning with System 8 and CWS 4.5.0.33, two new columns “Records” and “Pages/Record” have become available for display inside Active Jobs window inside CWS. The new columns will show information only for advanced VDP language files, or when Define Record Length is set inside job properties. In all other instances, these columns will be blank.

The “Records” column will display how many records are contained in the file. The “Pages/Record” column will display a number of pages in a record (“/” means “per”). Advanced language VDP jobs may have variable record lengths and when this occurs, will display Pages per Record information as a range, from smallest to largest. (Example: “1 - 3”)

### 2.4.2. UI Behavior

Job Title	Pages/Record	Records	Pages
H. A4P_10P.pdf			10 <- Normal Job
H. A4P_10P.pdf	1-3	4	10 <- "Define Record Length" Job
H. Persona_2x3_3pg_32rec.alp	3	32	96 <- VDP Job

## 2.5. Impose 2.7

### 2.5.1. Overview

Impose 2.7 is included in CWS4.6 or above.

New Features:

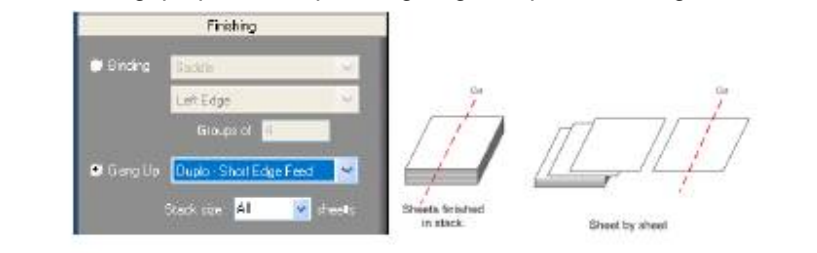
- VDP Gangup options: Duplo Long Edge, Duplo Short Edge
- Binding option: Repeat Booklet (Double Digest printing)
- Binding option: Top Edge Binding
- VDP wireframe and thumbnail preview

Enhancement:

- Job Label Enhancement
- Gutter GUI Enhancement
- Acrobat 8 bundled

There are no local changes for Canon from EFI generic specification.

### 2.5.2. VDP Gangup options: Duplo Long Edge, Duplo Short Edge



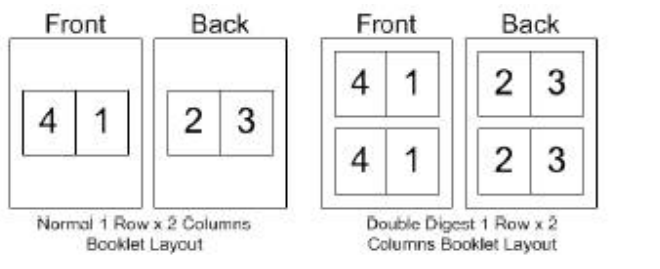
The Duplo gang up layout supports pagination scheme required by the sheet-fed Duplo slitter/cutter/creaser finishing equipments.

This feature is available for VDP job only.

This feature is not available for HotFolder and / Virtual Printer.

Please note this feature is only for a pagination scheme not a support of new finishing hardwares.

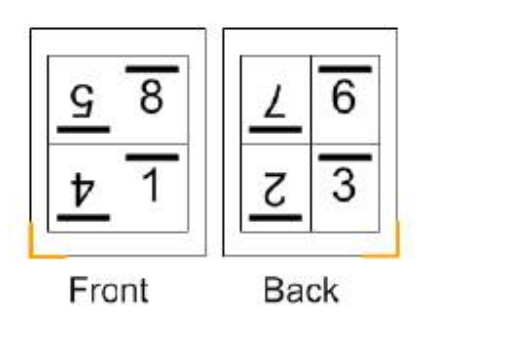
### 2.5.3. Binding option: Repeat Booklet (Double Digest printing)



This feature allows the user to create layout consisted of two booklets. In essence, Repeat Booklet enables step&repeat of booklet layout onto a sheet to maximize paper usage. (e. g. get two A5 booklets from A3 sheets)

#### 2.5.4. Binding option: Top Edge Binding

The Top Edge Binding feature creates pagination scheme which position the location of the spine at the top of the page.

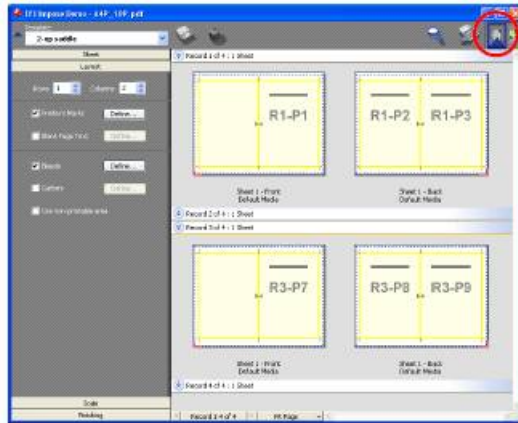


#### 2.5.5. VDP wireframe and thumbnail preview

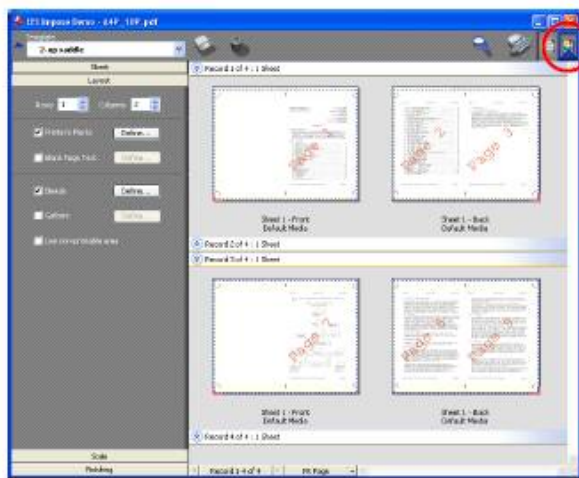
(No changes on printed results)

[Implementation of VDP preview of Impose 2.6]

- Different Impose UI is opened for normal job vs VDP job.
  - Live preview while changing properties is not available.
  - After clicking a preview button, Imposed real images are previewed.
- [New implementation of VDP preview of Impose 2.7]
- Similar Impose UI is opened for both normal job and VDP job.
  - Live wireframe preview is presented while changing properties. The horizontal bar above the pagination info denotes the "Top" of the page content which signify the orientation of the page.
  - The low-resolution thumbnail preview is dynamically generated on demand; it does not require actual ripping. The thumbnails are only updated as the user toggles between the wireframe and thumbnail views.
  - Wireframe and thumbnail previews are accessible in a range of records only. Previews will not be accessible by referencing to "Set" or "Sheet".
  - Previews display 5 records or sets by default; with first record or set expanded.



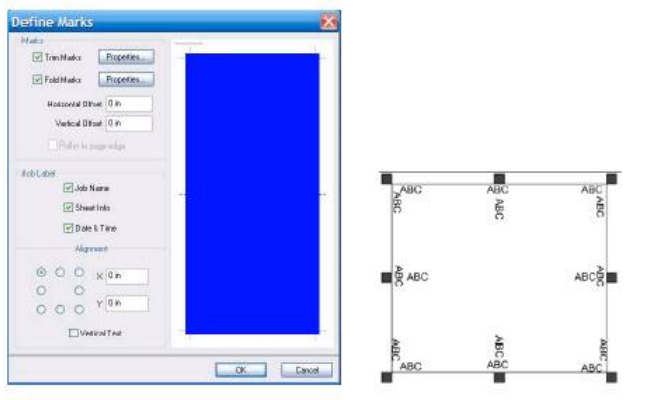
Wireframe preview for a VDP job



Thumbnail preview for a VDP job

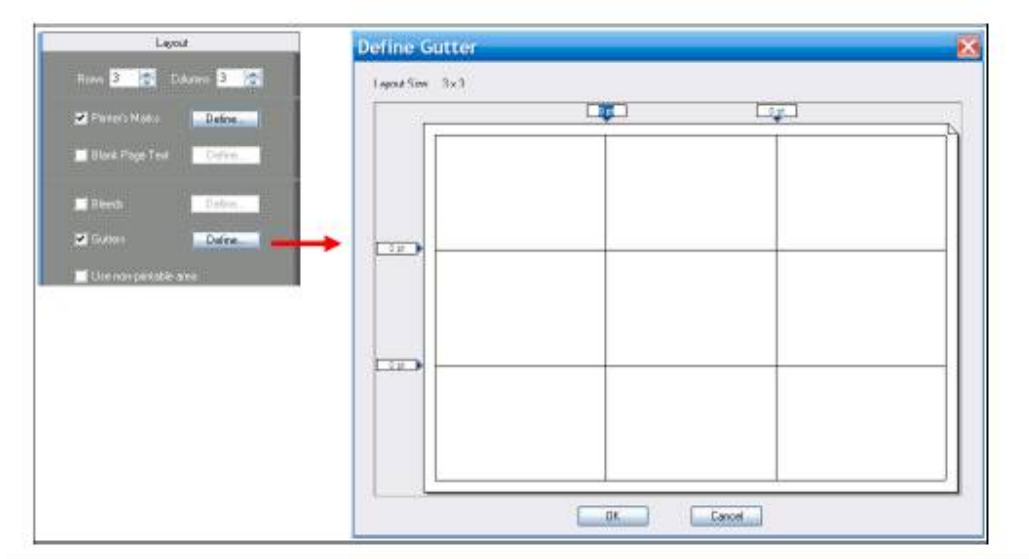
### 2.5.6. Job Label Enhancement

The enhancement allows offset (in X, Y directions) of the sheet label position from a point of original. It also enables sheet label to be printed horizontally or vertically.



### 2.5.7. Gutter GUI Enhancement

A new button “Gutters -> Define...” is shown under “Layout” pane; available under Impose GUI, HotFolders, and Virtual Printer regardless of job types. It invokes the “Define Gutters” modal dialog which replicates the gutter controls which was available only in the layout mode at Impose 2.6.

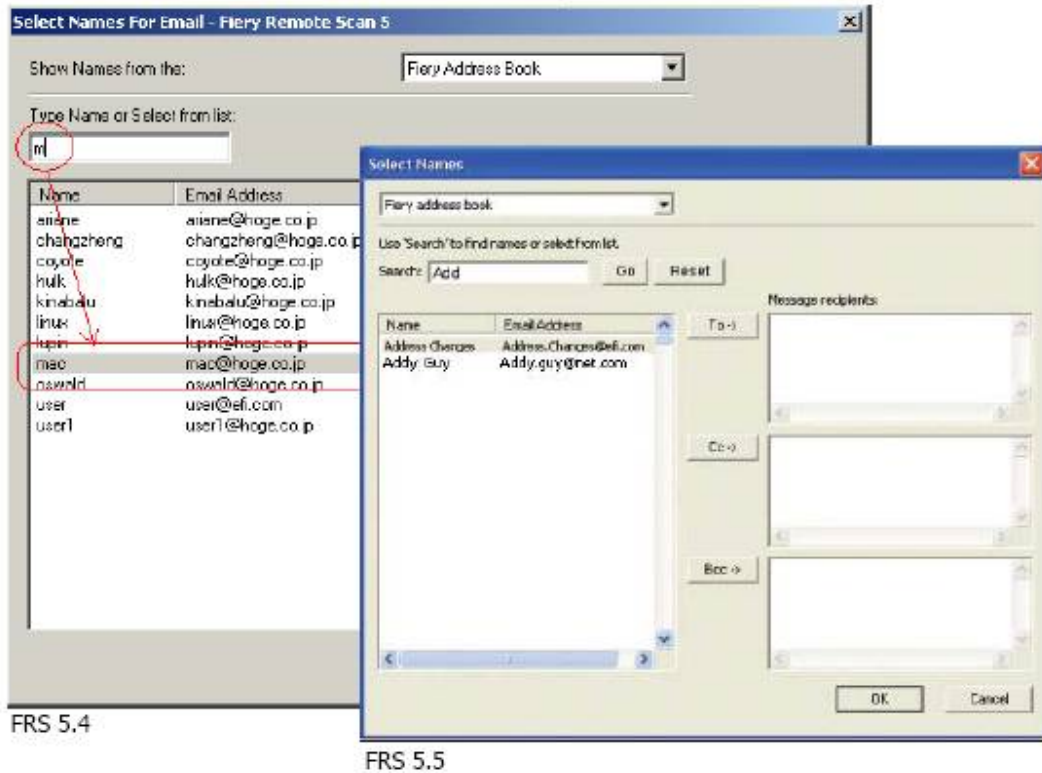


### 2.5.8. Acrobat 8

EFI volume licensed Acrobat 8 standard is bundled. The version of Enfocus PitStop Professional will be changed, too. As of today, Acrobat 8.1 and Pitstop is v7.2.

## 2.6. Fiery Remote Scan

The user can filter the contents of the currently displayed list by entering information in the Search: field and selecting "Go". Pressing reset returns to the list and search boxes to their original state.



## 2.7. Booklet Maker

### 2.7.1. Goal of Booklet Maker 3

Usability improvement is the primary goal of version 3.

### 2.7.2. Restriction

This feature does not support MacOS9.

### 2.7.3. Summary of Major Changes

- New UI grouping under "Layout" tab
- Gang-up Print
- Configuration of settings via 2 modes: Basic (wizard based) and Advance.
- Introduce the notion of top binding edge.
- Include "Paper Size" as standard feature.
- Supports assignment of "Paper Source" for saddle cover via tray designation or Paper Catalog selections.
- The GUI is common for both EFI Driver and Job Properties with only minor differences
- Scaling factor is determined automatically by the system and it can be overridden by user

#### 2.7.4. Basic:

The Basic workflow utilizes wizard based GUI which guides the user through the pro-cess of defining the booklet in a series of pre-determined steps. Depending on the booklet type desired, the workflow may involve up to maximum of 5 steps.

The following table describes the steps involved for each booklet type

	<b>Booklet Type</b>	<b>Booklet Type (cover prepared)</b>	<b>Paper Size</b>	<b>Page Alignment</b>	<b>Cover</b>	<b>Summary</b>
Saddle	Yes	Yes	Yes	Yes	Yes	Yes
Nested Saddle	Yes	N/A	Yes	Yes	N/A	Yes

The following table describes the steps involved for each booklet type and parameter available in each step for each booklet type:

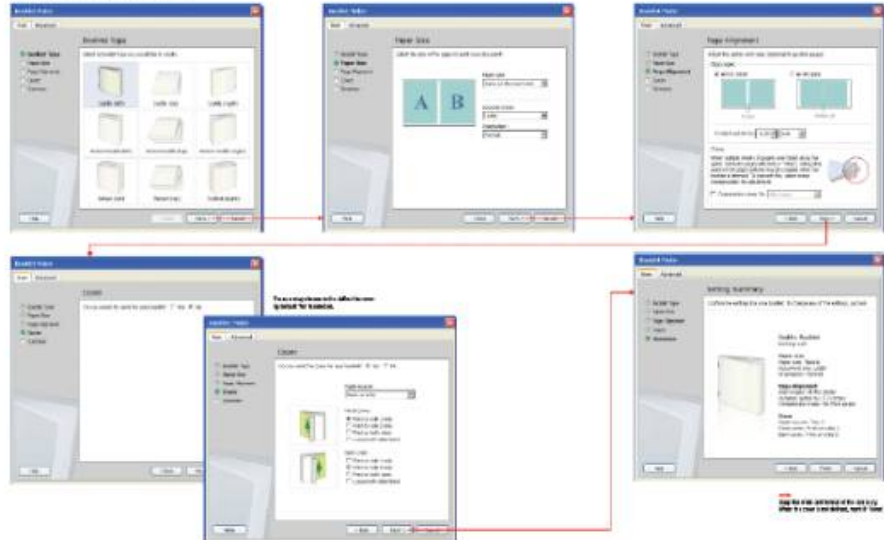
Booklet Type	Paper Size	Page Alignment	Cover Content; Cover Spine and Media
<b>Saddle (Left),(Right),( Top)</b>	Paper Size Document Size(driver only) Orientation (driver only) Shrink to fit (advance tab only)	Align pages - at the center - at the spine Increase gutter by - Compensate creep	Content input - Cover Media - Booklet Cover Source - Front Cover - Back Cover (When Cover = True)
<b>Nested Saddle (Left),(Right),( Top)</b>	Paper Size Document Size (driver only) Orientation (driver only) Shrink to fit (Advanced tab only) Number of sheet in each subset	Align pages - at the center - at the spine Increase gutter by - Compensate creep	N/A

## 2.7.5. Saddle

### Layout—Creating booklet with 'Basic' method: Saddle

Note

1. Use the following steps to create a saddle-stitched booklet.

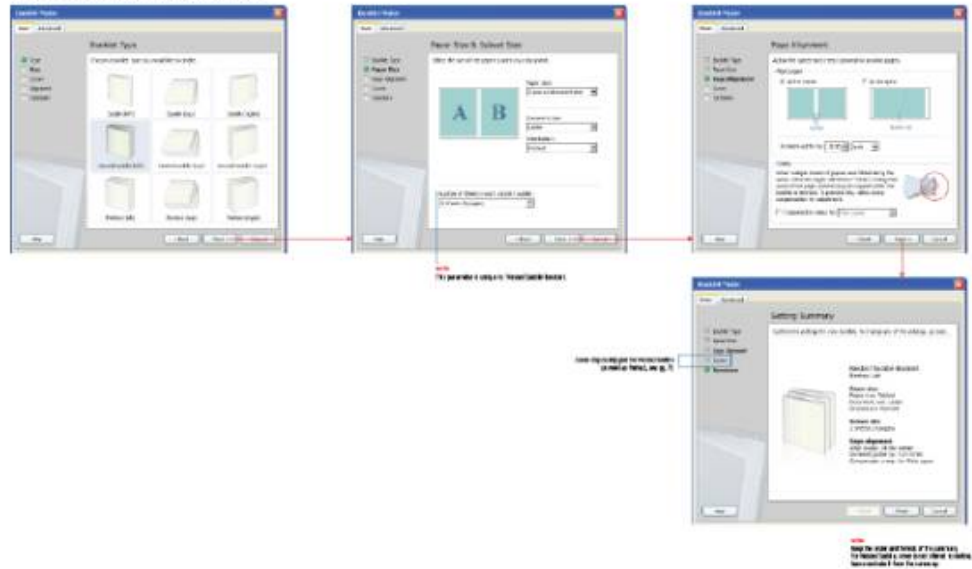


## 4.7.6. Nested Saddle

### Layout—Creating booklet with 'Basic' method: Nested Saddle

Note

1. Use the following steps to create a nested saddle-stitched booklet.



2.7.7. Advance:

The Advance workflow presents all Booklet Maker parameters within a single dialog. Available controls may vary and are populated dynamically depending on the booklet type selected. The following table summarizes the controls available for each booklet type.

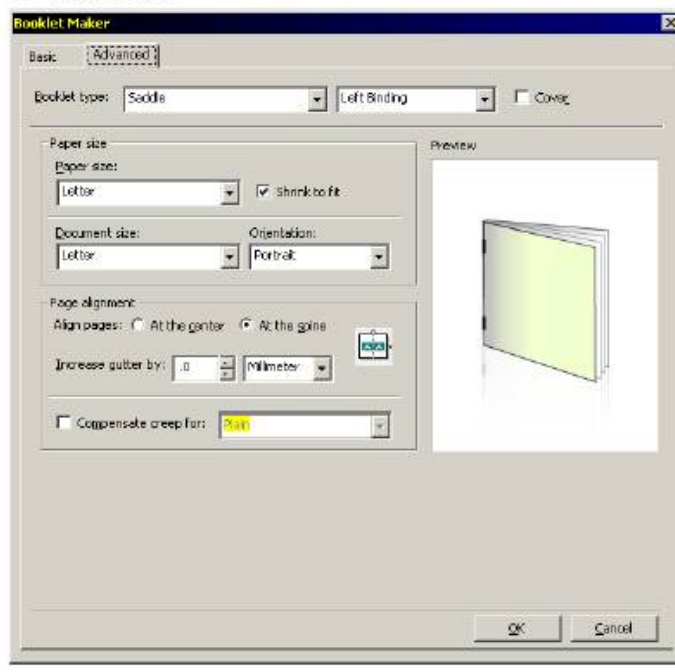
Controls	Saddle	Nested Saddle
Booklet Type	Yes	Yes
Binding Edge	Yes	Yes
Cover	Yes	No
Paper Size	Yes	Yes
Document Size	Yes *	Yes *
Orientation	Yes**	Yes**
Shrink to fit	Yes	Yes
Align Pages (At the center)	Yes	Yes
Align Page (At the spine)	Yes	Yes
Increase gutter by	Yes	Yes
Gutter Unit	Yes	Yes
Compensate creep for	Yes	Yes
Content Input	Yes	No
Cover Media	Yes	No
Front Cover	Yes	No
Back Cover	Yes	No
Booklet Cover Source	No	No
Number of sheets in each subset (Saddle)	No	Yes

\*: When Booklet Maker is invoked under Job Properties, the "Document Size" control is not editable and is for display only.

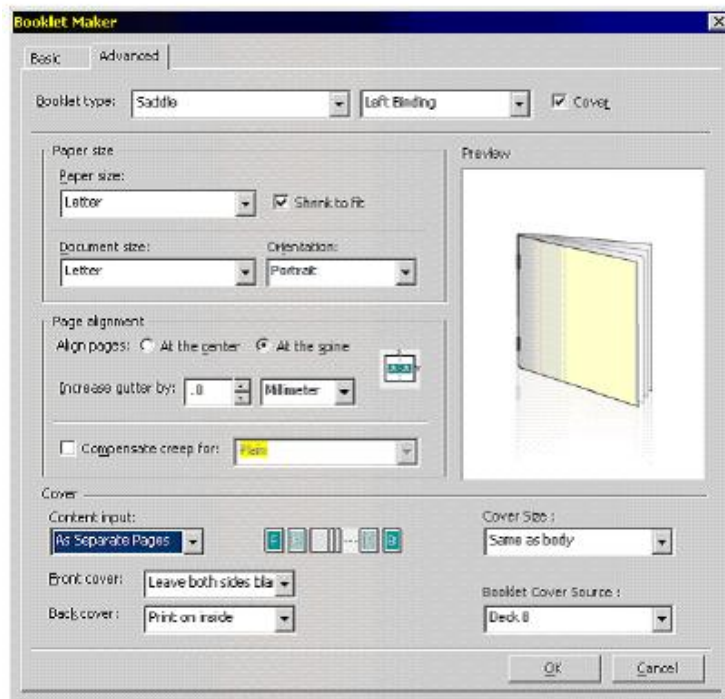
\*\* : When Booklet Maker is invoked under Job Properties, the "Orientation" control is not available.

## 2.7.8. Advance (GUI)

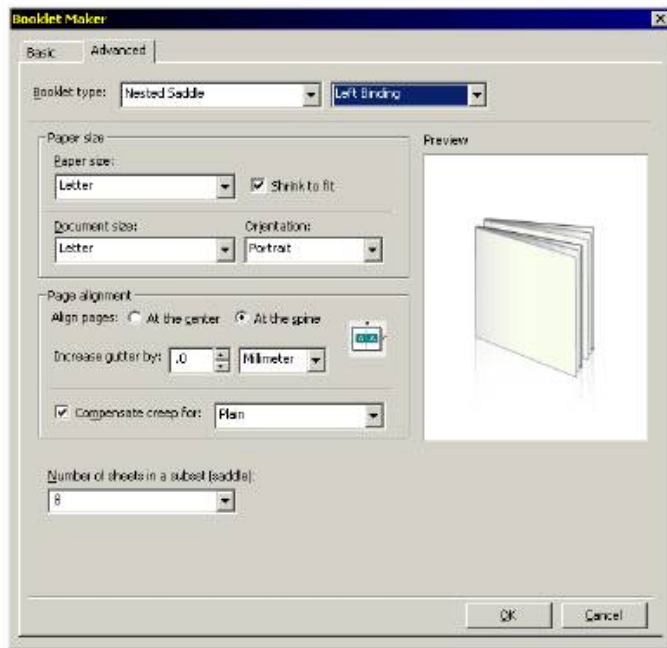
- Saddle type



- Saddle type with cover

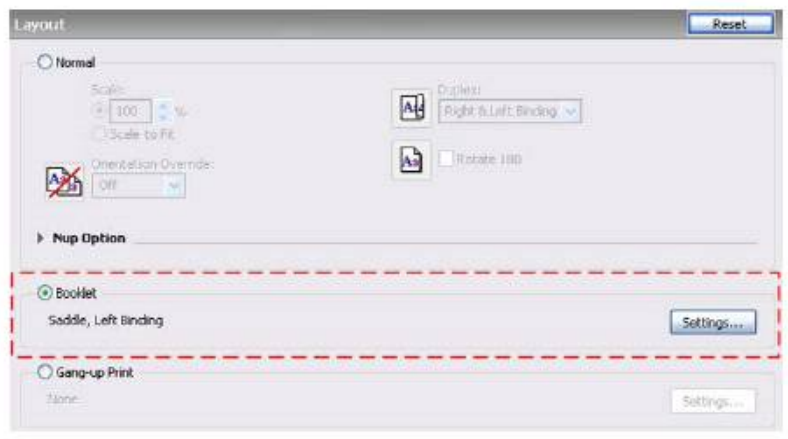


- Nested Saddle type



### 2.7.9. Access to Booklet Maker

All Booklet Maker settings are now under the "Layout" tab.



## **2.8. Job Mismatch**

When the Job Mismatch feature is enabled, the Fiery will detect if a job can print based on the engine's available media and, if the media is not available, remove it from the list of currently printing jobs so that other jobs can print.

### **2.8.1. Cancel on Mismatch**

When Cancel is selected, this will cancel jobs upon a detected mismatch. The Cancel option is available on all systems.

### **2.8.2. Setup**

This feature can be set from LCD and WebTools3.

## **2.9. Bonjour**

Bonjour is an open and standards-based network technology that allows to automatically connect electronic devices on the network and to use them seamlessly without user configuration.

Supporting this feature in the Fiery controller allows users to use Fiery as a printer from a Bonjour-enabled client PC if they physically connect Fiery to the network without setting its IP address or DNS.

## **2.10 IEEE 802.1x**

IEEE802.1x is a mechanism standardized by IEEE to authenticate users at access points of LAN switches and wireless LAN. Supporting this feature allows users to install the Fiery controller in the IEEE802.1x environment.

The Fiery controller requires authentication at start up time or when Ethernet cable is disconnected and reconnected. Unless authentication is granted, the Fiery controller is not connected to the network.

The Fiery controller supports 2 authentication methods, MD5-Challenge and EAP-MS-CHAPv2. MD5-Challenge is an authentication method that uses a user ID and a password.

EAP-MS-CHAPv2 is an authentication method where the server side authenticates via an electronic certificate and the client side uses an ID and a password.

## 3. Additional Feature for GX200/Q2

### 3.1. Software upgrade from GX100 / Q1

#### 3.1.1. Overview

Upgrade from GX100 / Q1 is supported in field and this means that GX200 / Q2 software on S450 (Q1/GX100 HW) is also supported.

#### 3.1.2. System software configuration

- DVD1 is common of Hardware platform which is S450 and Pro80.
- GX100 / Q1 Product name is same between upgraded model from 1.x and preinstall 2.0 model

### 3.2. Calibration measurement page size enhancement

#### 3.2.1. Overview

Currently 11x17/A3/Letter/A4 paper sizes are used for calibration measurement page. Large full bleed paper size such as SRA3 and 12x18 are supported for calibration measurement page size.

#### 3.2.2. Calibration method

The supported calibration method for this feature request is as follows:

- Measurement Method: GretagMacteth Eye-One
- Page type: 21/34 Sorted/Randomized Patches
- Paper Size: 11x17/A3/SRA3/12x18

Note: 21 patch-measurement page is also available for large size paper.

### 3.3. Minor improvement

#### 3.3.1. Hot Folders setup

Hot Folders On/Off setting is added into configuration page.

#### 3.3.2. Multiple custom page size support in Mixed Media

More than one kinds of custom page size can be set in Mixed Media. This is already available for S2 Ver2 and A3100/2100/1100 has already had it.

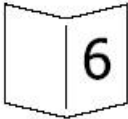
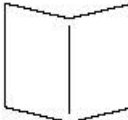
### 3.4. Blank page detection

#### 3.4.1. Overview

This feature is that the counter of a copier is not made to count up if a blank page exists in the job.

#### 3.4.2. Restriction

There is a case of counting up the copier counter, when a booklet job includes the blank page. Copier counts the combination of Blank page and image page

	Booklet image	Copier Counter Count Up
Case 1		Yes (1)
Case 2		No (0)

### 3.5. Drop off Text/Graphics Quality

#### 3.5.1. Overview

This functionality is buggy. Also, Canon's engine applies Canon own smoothing, but in case this functionality is turned on, quality is getting worse because EFI's smoothing and Canon's smoothing conflicts.

### **3.6. Print Gray using Black only**

#### 3.6.1. Overview

The current name "Print Gray as Black" doesn't make sense for the native English speaker.

### **3.7. Advanced Smoothing default=OFF [Q2 Only]**

#### 3.7.1. Overview

Currently Advanced Smoothing default setting is "Smooth 1". (Field claim)

### **3.8. Bundle Adobe JapanColor Profile**

#### 3.8.1. Overview

EFI's JapanColor (Japan Color 2001Coated) is green-ish than Adobe's one. EFI's JapanColor does simulate JapanColor's specification, but the user prefers Adobe's one. (Field claim) Regardless of Bidi, this profile always shows on the driver or application.

### **3.9. Output Intent Profile and Rendering Intent**

#### 3.9.1. Overview

If a profile includes in DestOutputProfile, Fiery controller uses the profile.

### **3.10. Forgra Media Wedge: additional color bar**

#### 3.10.1. Overview

Fiery adds the color chart into the job if the job is Altona Visual and Output intent is On.

### **3.11. H2O(A3100/2100/1100) Compatible Output Profiles**

#### 3.11.1. Overview

Output profiles are updated from "v1F" to "v2F". The new output profiles are made using H2O (**A3100/2100/1100**) color design policy. Note that "H2O (**A3100/2100/1100**) Compatible" does NOT mean that color values should be identical with H2O(**A3100/2100/1100**) , as C7000VP and C6000 are different Engine.

